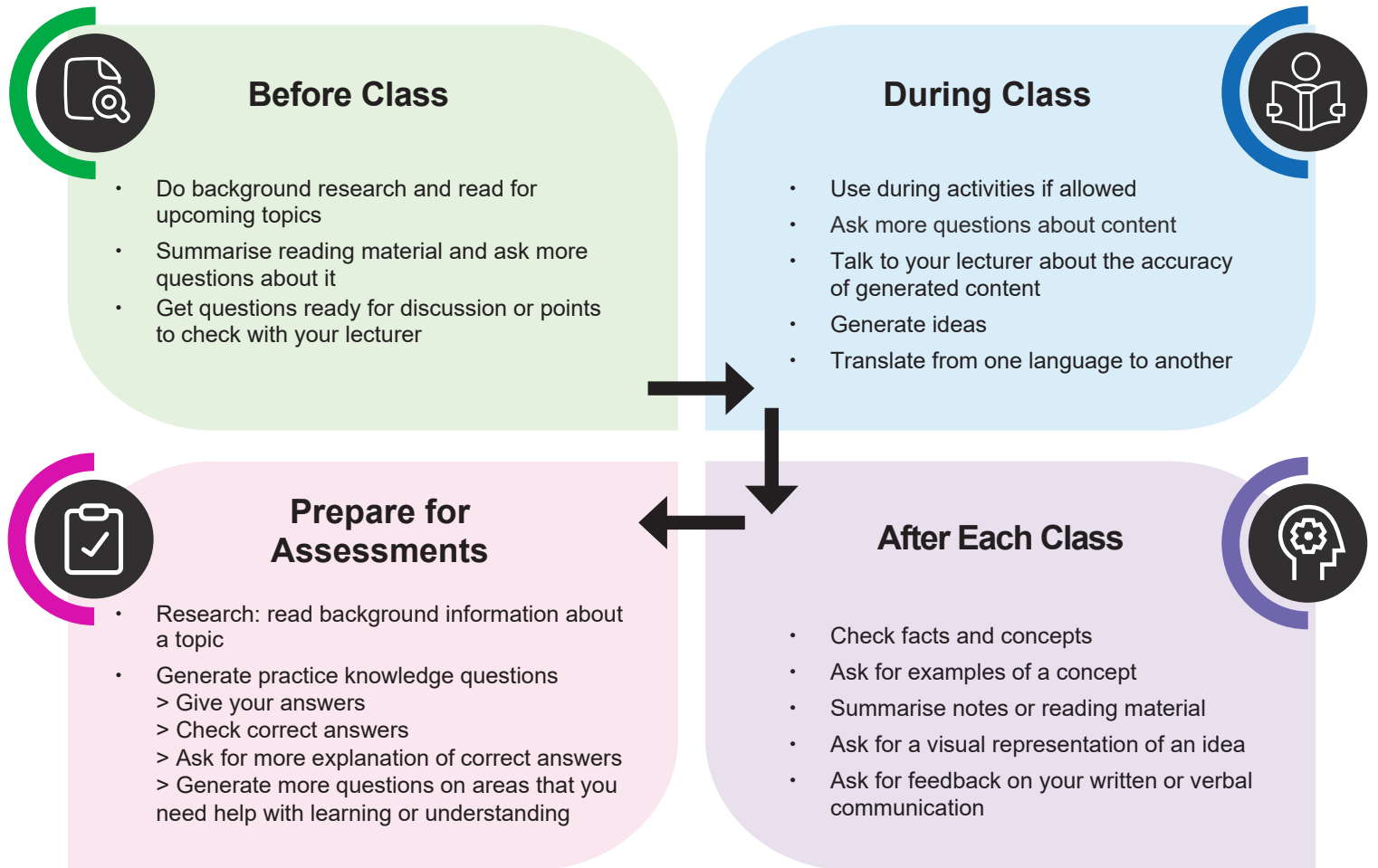


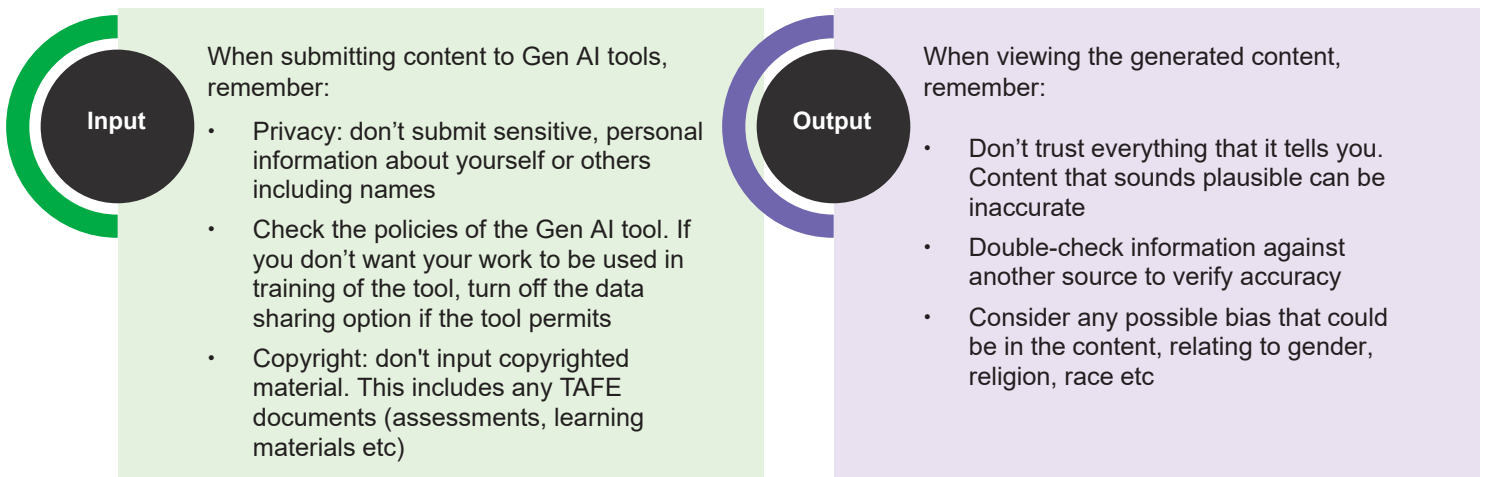
# Learner's Guide

## Generative Artificial Intelligence and Academic Integrity

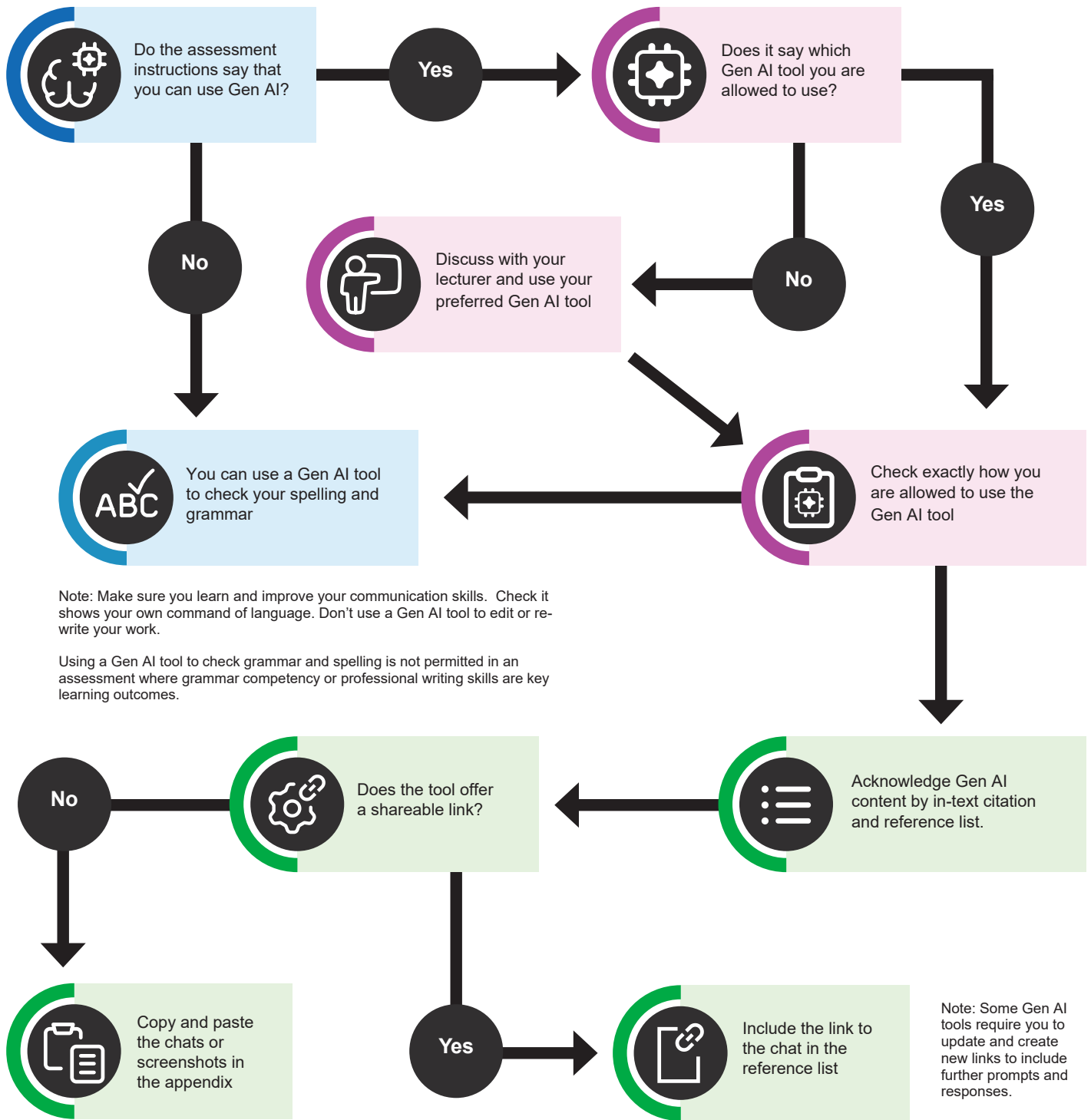
### How to use Generative Artificial Intelligence (Gen AI) to help you study



### Use caution when using Gen AI tools



# Can I use Gen AI in an assessment?



## Generative AI and academic integrity resources

- [Learn more about Gen AI and appropriate use](#) (TAFE NSW)
- [How to reference Gen AI use](#) (TAFE NSW)

North Regional TAFE links:

- [Student Learning Resources](#)
- [Policies and Responsibilities](#)